

SUITE G

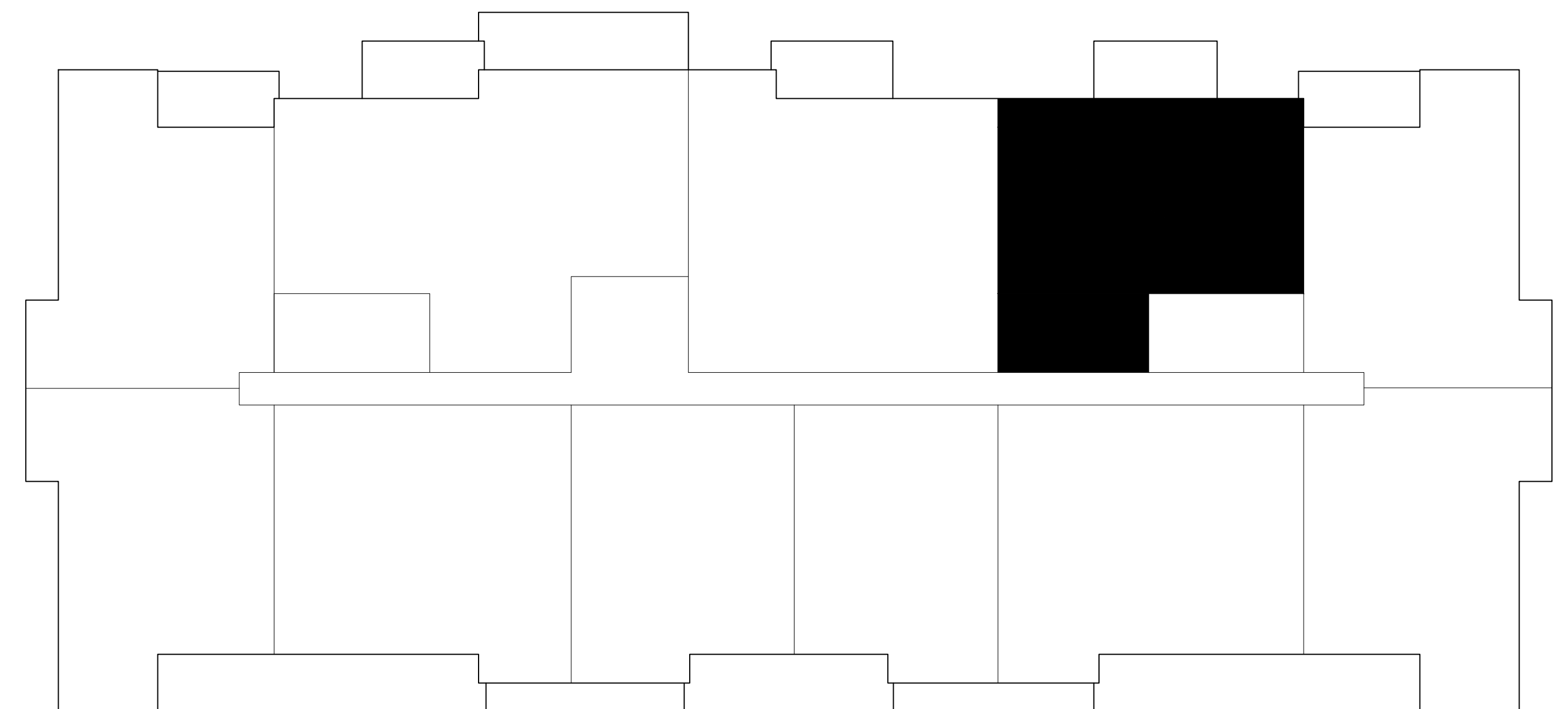


- 1 BEDROOM + DEN
- 1 BATHROOM + POWDER ROOM
- LAYOUT - 1335 sf
- BALCONY - 125 sf

FEATURES:

- SOLID SURFACE COUNTERTOPS
- 7' KITCHEN ISLAND
- 6 APPLIANCES:
WASHER / DRYER
FRIDGE & STOVE
DISHWASHER
MICROWAVE

STREET / PARKING LOT



LOCATION ON LEVEL 1

The Marci
at **35**

35 Farringdon Way