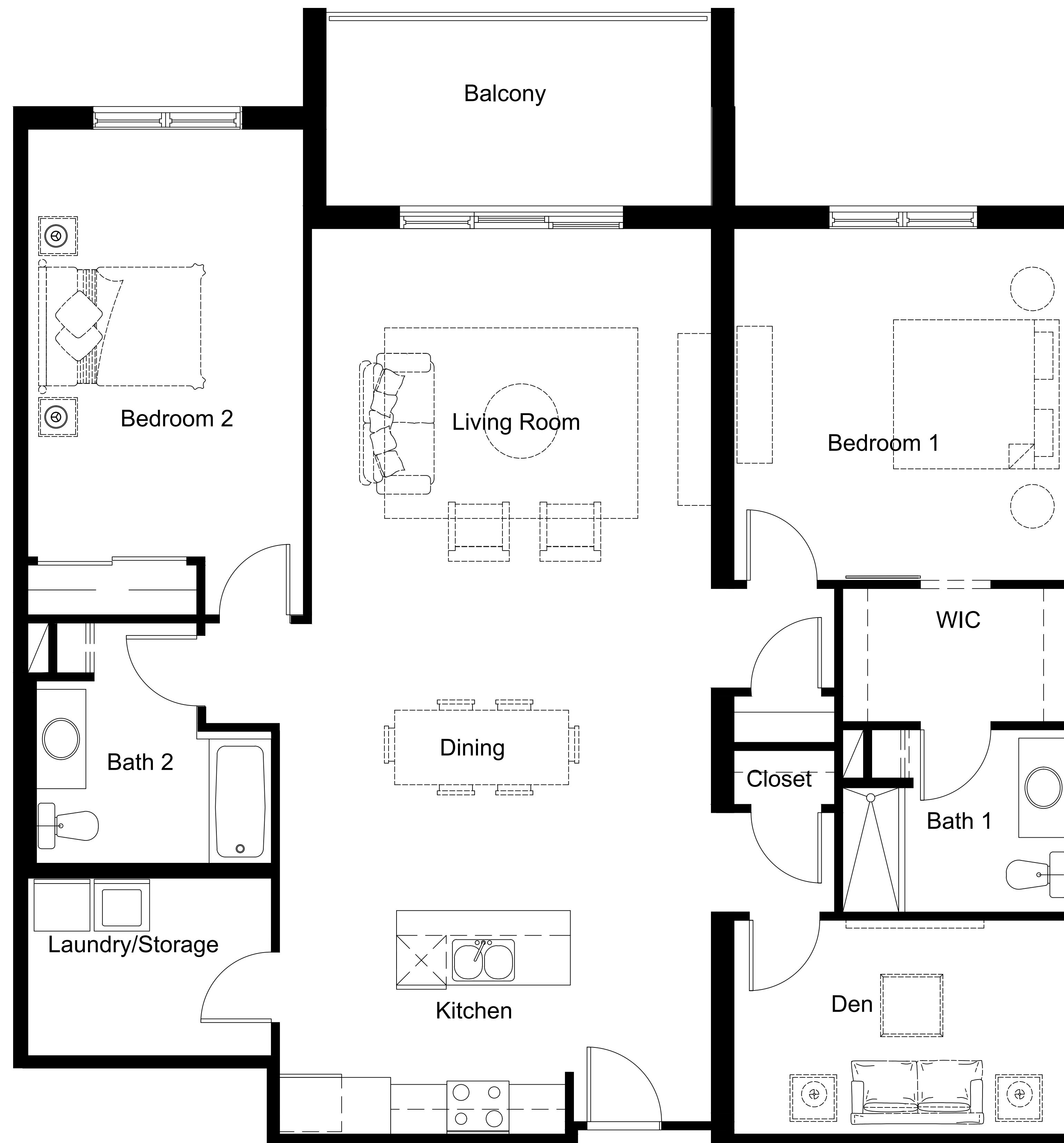


SUITE B

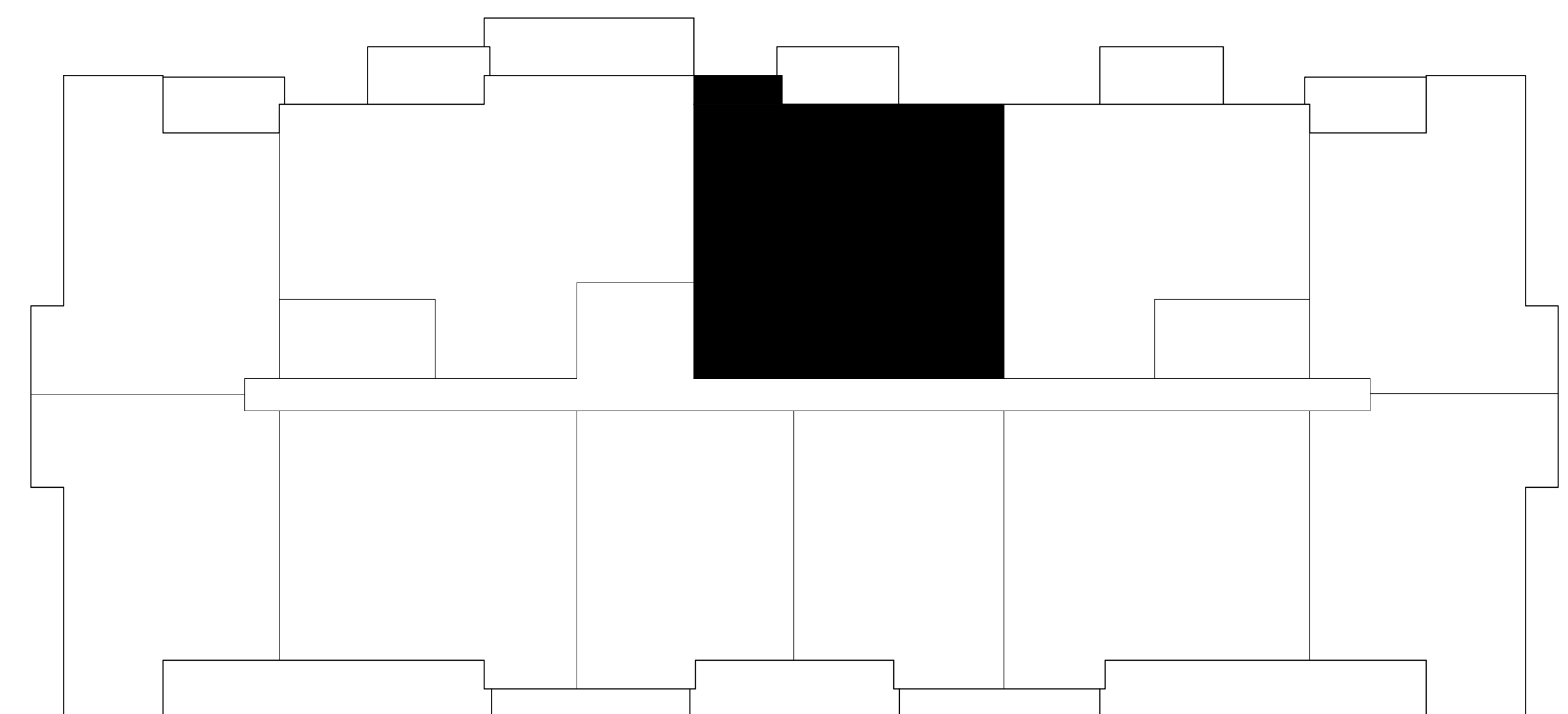
- 2 BEDROOM + DEN
- 2 BATHROOMS
- LAYOUT - 1630 sf
- BALCONY - 125 sf

FEATURES:

- SOLID SURFACE COUNTERTOPS
- 7' KITCHEN ISLAND
- WALK-IN SHOWER IN EN-SUITE BATH
- 6 APPLIANCES:
WASHER / DRYER
MICROWAVE
DISHWASHER
FRIDGE & STOVE



STREET / PARKING LOT



LOCATION ON LEVELS 1, 2, 3 & 4

The Marci
at **35**

35 Farringdon Way